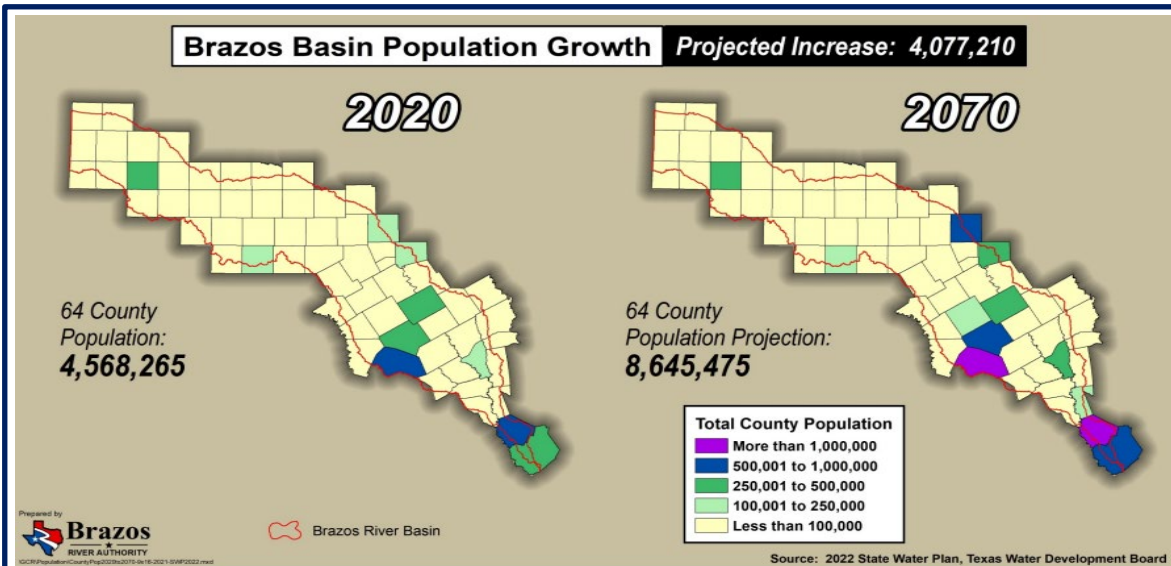




Integrated Water Resources Plan

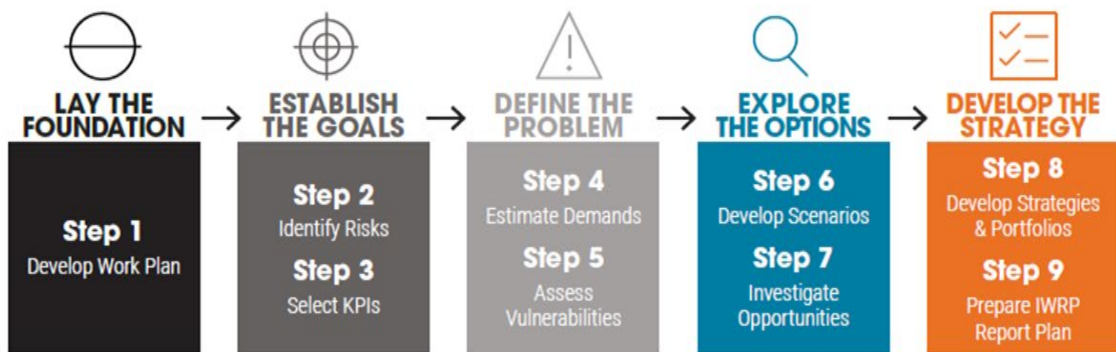


The Project

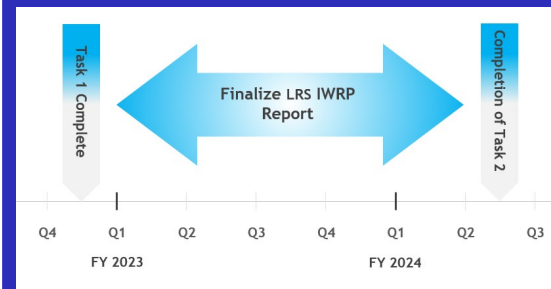
Internal analyses, regional water plans, and requests from current/potential customers indicate that additional water supplies are needed to meet future water demands. The Integrated Water Resources Plan (IWRP) will: 1) develop an inventory of strategies to create water supplies and scenarios of potential combinations of water supply strategies, 2) assess the effectiveness of scenarios in meeting various combinations of timing and location of demands and 3) consider the impact on reliable supply, factors of safety, System Rate implications etc. to recommend strategy scenarios for implementation. The IWRP will convey actions in a manner that simplifies critical decision making related to new water supply opportunities and management of water supply within the BRA water supply system. Furthermore, the information from the IWRP can be integrated into the regional and state water planning process. Throughout the development of the IWRP, engagement of BRA's customers and other stakeholders will be sought in a transparent and proactive manner.

Current Project Status 1/5/2024

- Phase I was initiated in FY22 Q1 and is focused on the Little River System
- Task 1: Basis of Planning is complete
- Task 2: Little River Watershed Analyses is currently underway and will be completed at the end of Phase I
- Key Component of Task 2 is preparation of the Little River Watershed IWRP Report.
- Estimated Phase I completion is FY24 Q2



Planned Schedule



Note: BRA Fiscal Year Runs Sept to Aug

Budget Summary

FY 2024 Budget	\$75,000
FY 2024 Project Expenses (As of 11/30/2023)	\$38,587